



This is the print version of the [Skeptical Science](http://sks.to/overestimate) article '[IPCC overestimate temperature rise](http://sks.to/overestimate)', which can be found at <http://sks.to/overestimate>.

Monckton misuses IPCC equation

What The Science Says:

The IPCC surface temperature projections have been exceptionally accurate thus far.

Climate Myth: IPCC overestimate temperature rise

"The IPCC's predicted equilibrium warming path bears no relation to the far lesser rate of "global warming" that has been observed in the 21st century to date." ([Christopher Monckton](#))

1990 IPCC FAR

The Intergovernmental Panel on Climate Change (IPCC) [First Assessment Report \(FAR\)](#) was published in 1990. [The FAR used simple global climate models](#) to estimate changes in the global-mean surface air temperature under various CO₂ emissions scenarios. Details about the climate models used by the IPCC are [provided in Chapter 6.6 of the report](#)

The IPCC FAR ran simulations using various emissions scenarios and climate models. The emissions scenarios included business as usual (BAU) and three other scenarios (B, C, D) in which global human greenhouse gas emissions began slowing in the year 2000. The FAR's projected BAU greenhouse gas (GHG) radiative forcing (global heat imbalance) in 2100 was [approximately 3.5 Watts per square meter \(W/m²\)](#). In the B, C, D scenarios, the projected 2100 forcing was nearly 3 W/m². The [actual GHG radiative forcing](#) in 2011 was approximately [2.8 W/m²](#), so to this point, we're actually closer to the IPCC FAR's lower emissions scenarios.

The IPCC FAR ran simulations using models with [climate sensitivities](#) (the total amount of global surface warming in response to a doubling of atmospheric CO₂, including amplifying and dampening feedbacks) of 1.5°C (low), 2.5°C (best), and 4.5°C (high) for doubled CO₂ (Figure 1). However, because climate scientists at the time believed a doubling of atmospheric CO₂ would cause a larger global heat imbalance than is currently believed, the actual climate sensitivities were approximately 18% lower (for example, the 'Best' model sensitivity was actually closer to 2.1°C for doubled CO₂).

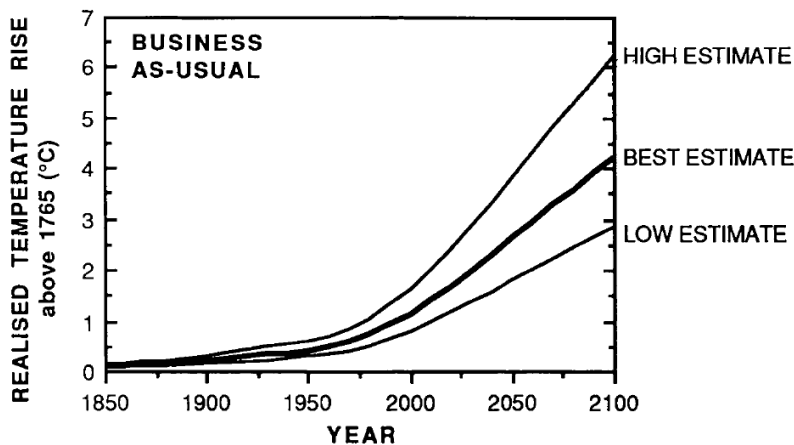


Figure 1: IPCC FAR projected global warming in the BAU emissions scenario using climate models with equilibrium climate sensitivities of 1.3°C (low), 2.1°C (best), and 3.8°C (high) for doubled atmospheric CO₂

Figure 2 accounts for the lower observed GHG emissions than in the IPCC BAU projection, and compares its 'Best' adjusted projection with the observed global surface warming since 1990.

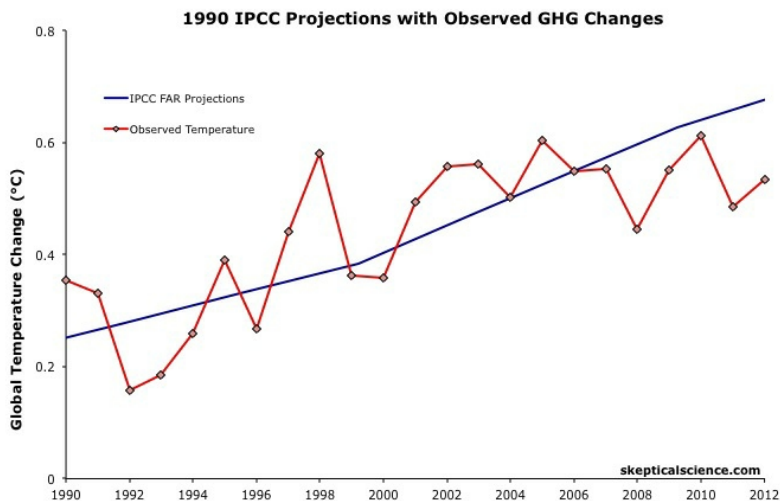


Figure 2: IPCC FAR BAU global surface temperature projection adjusted to reflect observed GHG radiative forcings 1990-2011 (blue) vs. observed surface temperature changes (average of NASA GISS, NOAA NCDC, and HadCRUT4; red) for 1990 through 2012.

Scorecard

The IPCC FAR 'Best' BAU projected rate of warming from 1990 to 2012 was 0.25°C per decade. However, that was based on a scenario with higher emissions than actually occurred. When accounting for actual GHG emissions, the IPCC average 'Best' model projection of 0.2°C per decade is within the uncertainty range of the observed rate of warming ($0.15 \pm 0.08^\circ\text{C}$) per decade since 1990.

1995 IPCC SAR

The IPCC [Second Assessment Report \(SAR\)](#) was published in 1995, and improved on the FAR by estimating the cooling effects of aerosols — particulates which block sunlight. The SAR included various human GHG emissions scenarios, so far its scenarios IS92a and b have been closest to [actual emissions](#).

The SAR also maintained the "best estimate" equilibrium climate sensitivity used in the FAR of 2.5°C for a doubling of atmospheric CO₂. However, as in the FAR, because climate scientists at the time believed a doubling of atmospheric CO₂ would cause a larger global heat imbalance than is currently believed, the actual "best estimate" model sensitivity was closer to 2.1°C for doubled CO₂.

Using that sensitivity, and the various IS92 emissions scenarios, the SAR projected the future average global surface temperature change to 2100 (Figure 3).

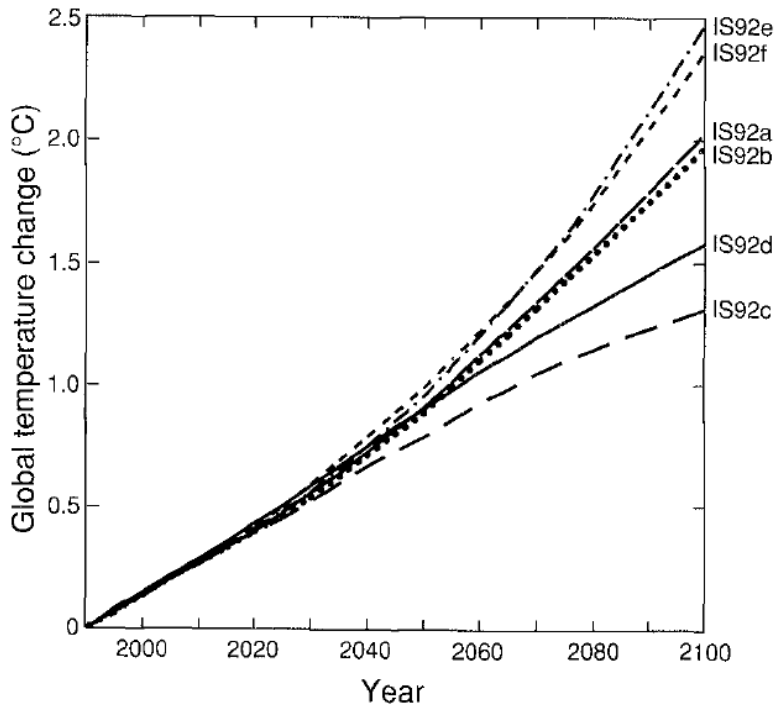


Figure 3: Projected global mean surface temperature changes from 1990 to 2100 for the full set of IS92 emission scenarios. A climate sensitivity of 2.12°C is assumed.

Figure 4 compares the IPCC SAR global surface warming projection for the most accurate emissions scenario (IS92a) to the observed surface warming from 1990 to 2012.

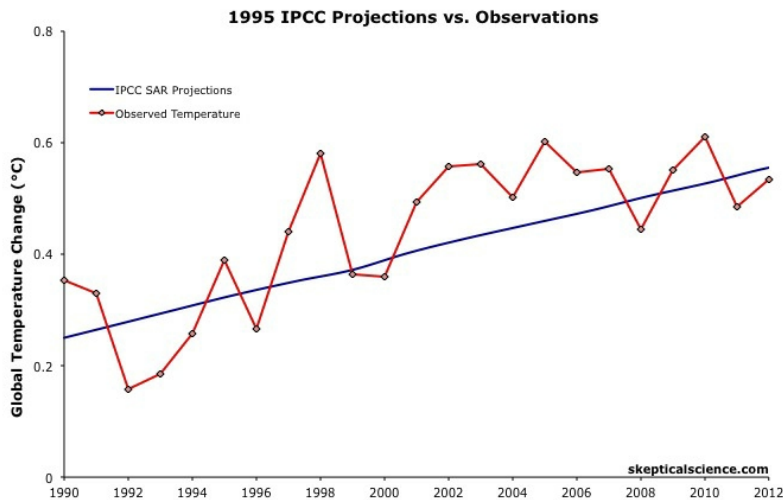


Figure 4: IPCC SAR Scenario IS92a global surface temperature projection (blue) vs. observed surface temperature changes (average of NASA GISS, NOAA NCDC, and HadCRUT4; red) for 1990 through 2012.

Scorecard

The IPCC SAR IS92a projected rate of warming from 1990 to 2012 was 0.14°C per decade. This is within the uncertainty range of the observed rate of warming (0.15 ± 0.08°C) per decade since 1990, and very close to the central estimate.

2001 IPCC TAR

The IPCC [Third Assessment Report \(TAR\)](#) was published in 2001, and included more complex global climate models and more overall model simulations. The IS92 emissions scenarios used in the SAR were

replaced by the IPCC Special Report on Emission Scenarios (SRES), which considered [various possible future human development storylines](#).

The IPCC model projections of future warming based on the various SRES and human emissions only (both GHG warming and aerosol cooling, but no natural influences) are shown in Figure 5.

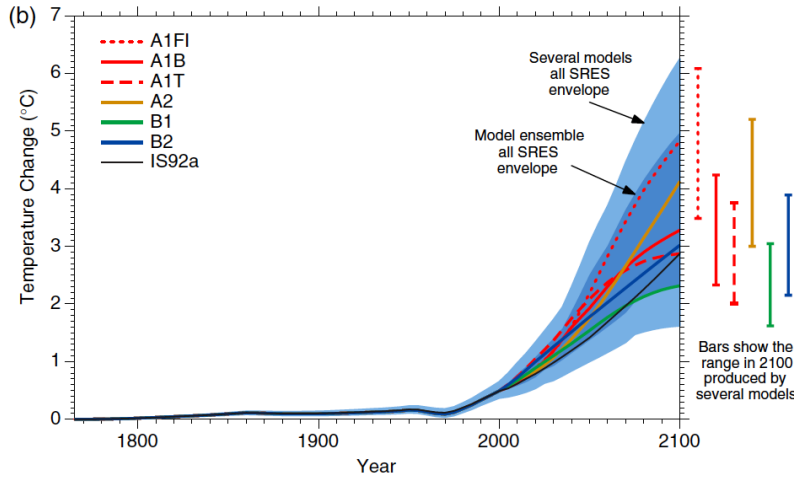


Figure 5: Historical human-caused global mean temperature change and future changes for the six illustrative SRES scenarios using a simple climate model. Also for comparison, following the same method, results are shown for IS92a. The dark blue shading represents the envelope of the full set of 35 SRES scenarios using the simple model ensemble mean results. The bars show the range of simple model results in 2100.

Thus far we are [on track with the SRES A2 emissions path](#). Figure 6 compares the IPCC TAR projections under Scenario A2 with the observed global surface temperature change from 1990 through 2012.

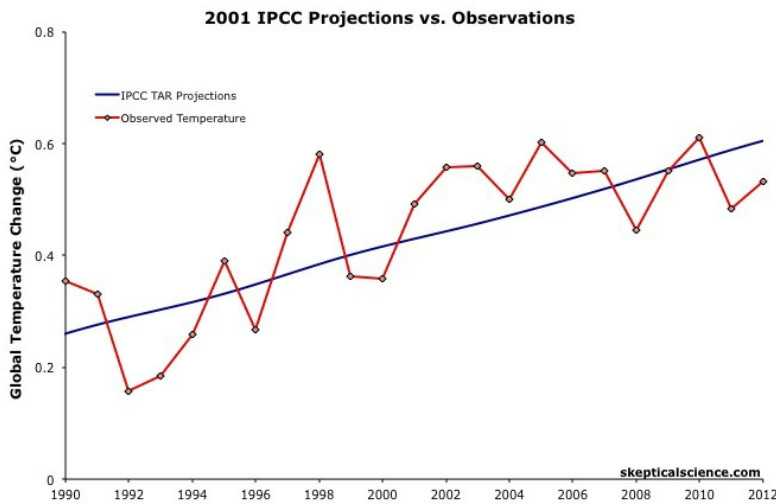


Figure 6: IPCC TAR model projection for emissions Scenario A2 (blue) vs. observed surface temperature changes (average of NASA GISS, NOAA NCDC, and HadCRUT4; red) for 1990 through 2012.

Scorecard

The IPCC TAR Scenario A2 projected rate of warming from 1990 to 2012 was 0.16°C per decade. This is within the uncertainty range of the observed rate of warming (0.15 ± 0.08°C) per decade since 1990, and very close to the central estimate.

2007 IPCC AR4

In 2007, the IPCC published its Fourth Assessment Report (AR4). In the Working Group I (the physical

basis) report, [Chapter 8](#) was devoted to climate models and their evaluation. [Section 8.2](#) discusses the advances in modeling between the TAR and AR4. Essentially, the models became more complex and incorporated more climate influences.

As in the TAR, AR4 used the SRES to project future warming under various possible GHG emissions scenarios. Figure 7 shows the projected change in global average surface temperature for the various SRES.

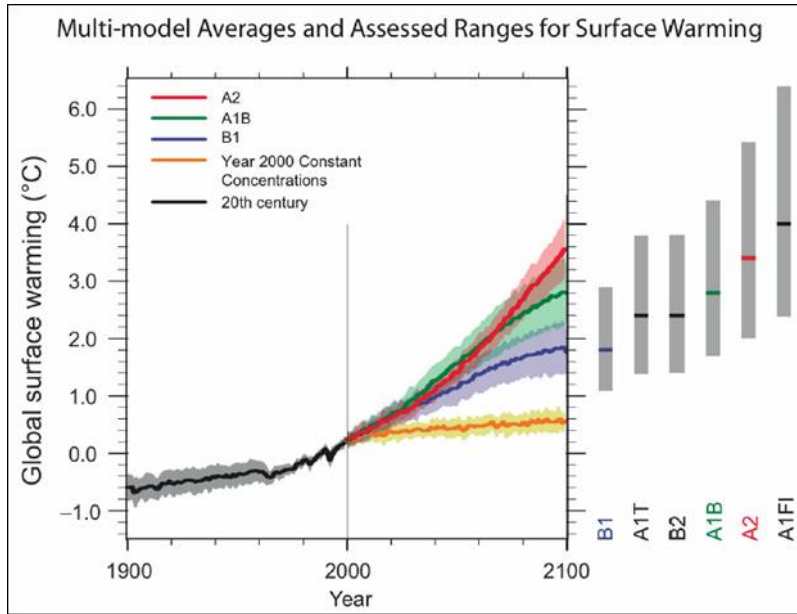


Figure 7: Solid lines are multi-model global averages of surface warming (relative to 1980–1999) for the SRES scenarios A2, A1B, and B1, shown as continuations of the 20th century simulations. Shading denotes the ± 1 standard deviation range of individual model annual averages. The orange line is for the experiment where concentrations were held constant at year 2000 values. The grey bars at right indicate the best estimate (solid line within each bar) and the likely range assessed for the six SRES marker scenarios.

We can therefore again compare the Scenario A2 multi-model global surface warming projections to the observed warming, in this case since 2000, when the AR4 model simulations began (Figure 8).

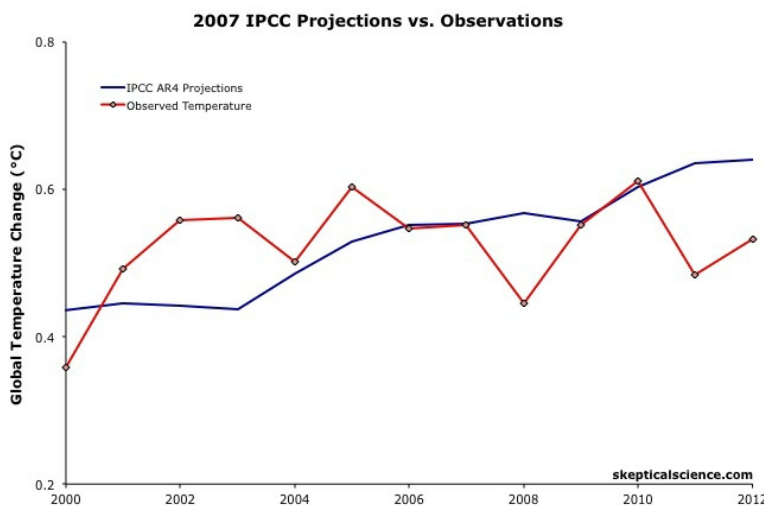


Figure 8: IPCC AR4 multi-model

projection for emissions Scenario A2 (blue) vs. observed surface temperature changes (average of NASA GISS, NOAA NCDC, and HadCRUT4; red) for 2000 through 2012.

Scorecard

The IPCC AR4 Scenario A2 projected rate of warming from 2000 to 2012 was 0.18°C per decade. This is within the uncertainty range of the observed rate of warming ($0.06 \pm 0.16^\circ\text{C}$) per decade since 2000, though

the observed warming has likely been lower than the AR4 projection. As we will show below, this is due to [the preponderance of natural temperature influences being in the cooling direction since 2000](#) while the AR4 projection is consistent with the underlying human-caused warming trend.

IPCC Projections vs. Observed Warming Rates

Tamino at the Open Mind blog has also compared the rates of warming projected by the FAR, SAR, and TAR (estimated by linear regression) to the observed rate of warming in each global surface temperature dataset. The results are shown in Figure 9.

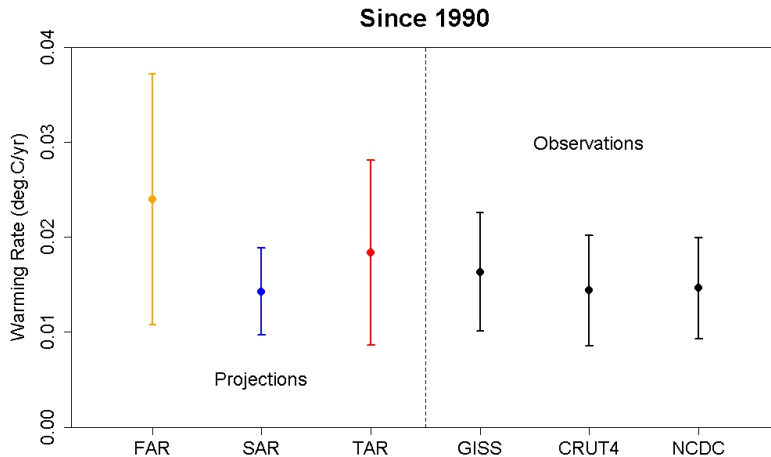


Figure 9: IPCC FAR (yellow) SAR (blue), and TAR (red) projected rates of warming vs. observations (black) from 1990 through 2012.

As this figure shows, even without accounting for the actual GHG emissions since 1990, the warming projections are consistent with the observations, within the margin of uncertainty.

Rahmstorf et al. (2012) Verify TAR and AR4 Accuracy

A [paper published in Environmental Research Letters](#) by Rahmstorf, Foster, and Cazenave (2012) applied the methodology of [Foster and Rahmstorf \(2011\)](#), using the statistical technique of multiple regression to filter out the influences of the El Niño Southern Oscillation (ENSO) and solar and volcanic activity from the global surface temperature data to evaluate the underlying long-term human-caused trend. Figure 10 compares their results with (pink) and without (red) the short-term noise from natural temperature influences to the IPCC TAR (blue) and AR4 (green) projections.

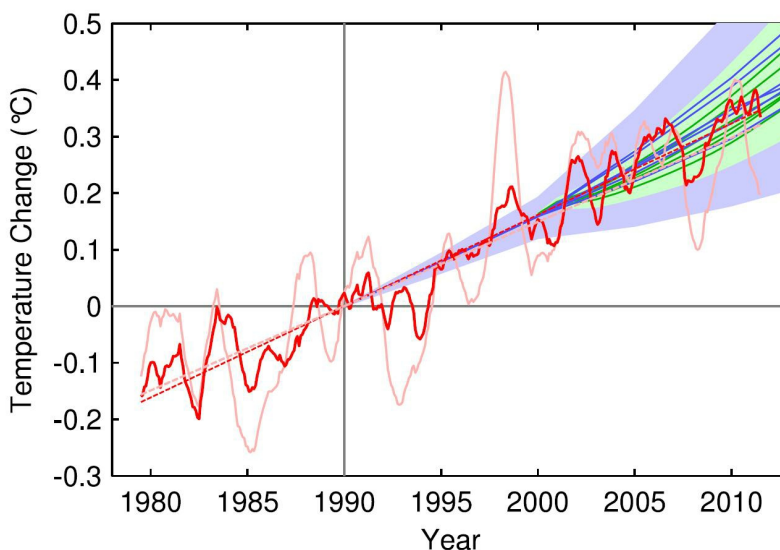


Figure 10: Observed annual global temperature, unadjusted (pink) and adjusted for short-term variations due to solar variability, volcanoes, and ENSO (red) as in [Foster and Rahmstorf \(2011\)](#). 12-month running averages are shown as well as linear trend lines, and compared to the scenarios of the IPCC (blue range and lines from the 2001 report, green from the 2007 report). Projections are aligned in the graph so that they start (in 1990 and 2000, respectively) on the linear trend line of the (adjusted) observational data.

TAR Scorecard

From 1990 through 2011, the Rahmstorf et al. unadjusted and adjusted trends in the observational data are 0.16 and 0.18°C per decade, respectively. Both are consistent with the IPCC TAR Scenario A2 projected rate of warming of approximately 0.16°C per decade.

AR4 Scorecard

From 2000 through 2011, the Rahmstorf et al. unadjusted and adjusted trends in the observational data are 0.06 and 0.16°C per decade, respectively. While the unadjusted trend is rather low [as noted above](#), the adjusted, underlying human-caused global warming trend is consistent with the IPCC AR4 Scenario A2 projected rate of warming of approximately 0.18°C per decade.

Frame and Stone (2012) Verify FAR Accuracy

A paper published in *Nature Climate Change*, [Frame and Stone \(2012\)](#), sought to evaluate the FAR temperature projection accuracy by using a simple climate model to simulate the warming from 1990 through 2010 based on observed GHG and other global heat imbalance changes. Figure 11 shows their results. Since the FAR only projected temperature changes as a result of GHG changes, the light blue line (model-simulated warming in response to GHGs only) is the most applicable result.

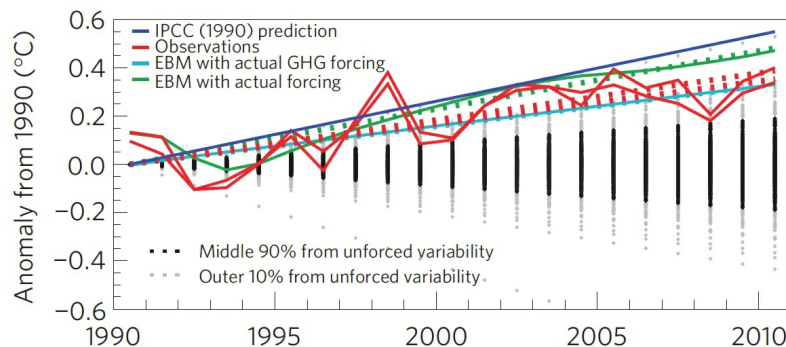


Figure 11: Observed changes in global mean surface temperature over the 1990–2010 period from HadCRUT3 and GISTEMP (red) vs. FAR BAU best estimate (dark blue), vs. projections using a one-dimensional energy balance model (EBM) with the measured GHG radiative forcing since 1990 (light blue) and with the overall radiative forcing since 1990 (green). Natural variability from the ensemble of 587 21-year-long segments of control simulations (with constant external forcings) from 24 Coupled Model Intercomparison Project phase 3 (CMIP3) climate models is shown in black and gray. From [Frame and Stone \(2012\)](#).

FAR Scorecard

Not surprisingly, the Frame and Stone result is very similar to [our evaluation of the FAR projections](#), finding that they accurately simulated the global surface temperature response to the increased greenhouse effect since 1990. The study also shows that the warming since 1990 cannot be explained by the Earth's natural temperature variability alone, because the warming (red) is outside of the range of natural variability (black and gray).

IPCC Trounces Contrarian Predictions

As shown above, the IPCC has thus far done remarkably well at predicting future global surface warming. The same cannot be said for the climate contrarians who criticize the IPCC and mainstream climate science predictions.

Richard Lindzen

One year before the FAR was published, [Richard Lindzen](#) gave [a talk at MIT in 1989](#) which we can use to reconstruct what his global temperature prediction might have looked like. In that speech, Lindzen remarked

"I would say, and I don't think I'm going out on a very big limb, that the data as we have it does not support a warming...I personally feel that the likelihood over the next century of greenhouse warming reaching magnitudes comparable to natural variability seems small"

The first statement in this quote referred to past temperatures — Lindzen did not believe the surface temperature record was accurate, and did not believe that the planet had warmed from 1880 to 1989 (in reality, global surface temperatures warmed approximately 0.5°C over that timeframe). The latter statement suggests that the planet's surface would not warm more than 0.2°C over the following century, which is approximately [the range of natural variability](#). In reality, [as Frame and Stone showed](#), the surface warming already exceeded natural variability two decades after Lindzen's MIT comments.

[Don Easterbrook](#)

Climate contrarian geologist Don Easterbrook has been predicting impending global cooling since 2000, based on expected changes in various oceanic cycles (including ENSO) and solar activity. Easterbrook made two specific temperature projections based on two possible scenarios. As will be shown below, neither has fared well.

[Syun-Ichi Akasofu](#)

In 2009, Syun-Ichi Akasofu (geophysicist and director of the International Arctic Research Center at the University of Alaska-Fairbanks) released [a paper](#) which argued that the recent global warming is due to two factors: natural recovery from the Little Ice Age (LIA), and "the multi-decadal oscillation" (oceanic cycles). Based on this hypothesis, Akasofu predicted that global surface temperatures would cool between 2000 and 2035.

[John McLean](#)

John McLean is a data analyst and member of the climate contrarian group [Australian Climate Science Coalition](#). He was lead author on [McLean et al. \(2009\)](#), which [grossly overstates the influence of the El Niño Southern Oscillation \(ENSO\)](#) on global temperatures. Based on the results of that paper, McLean [predicted](#):

"it is likely that 2011 will be the coolest year since 1956 or even earlier"

In 1956, the average global surface temperature anomaly in the three datasets (NASA GISS, NOAA NCDC, and HadCRUT4) was -0.21°C. In 2010, the anomaly was 0.61°C. Therefore, McLean was predicting a greater than 0.8°C global surface cooling between 2010 and 2011. The largest year-to-year average global temperature change on record is less than 0.3°C, so this was a rather remarkable prediction.

[IPCC vs. Contrarians Scorecard](#)

Figure 12 compares the four IPCC projections and the four contrarian predictions to the observed global surface temperature changes. We have given Lindzen the benefit of the doubt and not penalized him for denying the accuracy of the global surface temperature record in 1989. Our reconstruction of his prediction takes the natural variability of ENSO, the sun, and volcanic eruptions from [Foster and Rahmstorf \(2011\)](#) (with a 12-month running average) and adds a 0.02°C per decade linear warming trend. All other projections are as discussed above.

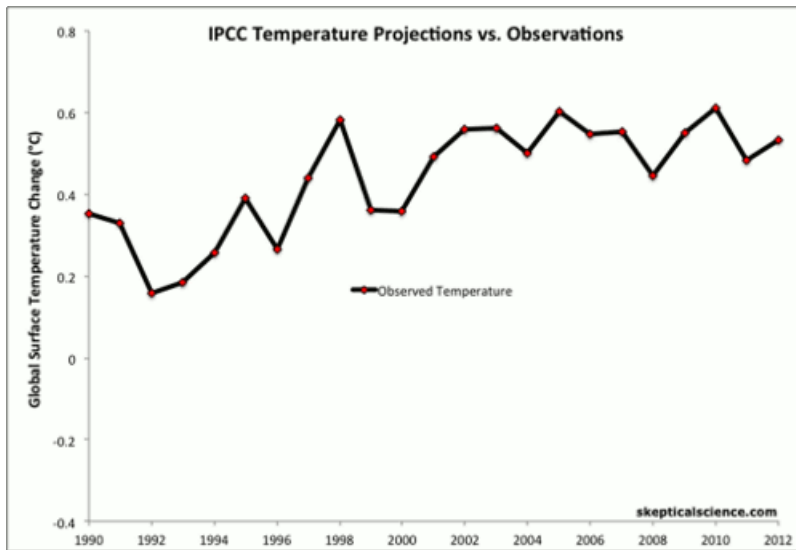


Figure 12: IPCC temperature projections (red, pink, orange, green) and contrarian projections (blue and purple) vs. observed surface temperature changes (average of NASA GISS, NOAA NCDC, and HadCRUT4; red) for 1990 through 2012.

Not only has the IPCC done remarkably well in projecting future global surface temperature changes thus far, but it has also performed far better than the few climate contrarians who have put their money where their mouth is with their own predictions.

Intermediate rebuttal written by dana1981

Update July 2015:

Here is a related lecture-video from [Denial101x - Making Sense of Climate Science Denial](#)

[see video at [this link](#).]



The Skeptical Science website by [Skeptical Science](#) is licensed under a [Creative Commons Attribution 3.0 Unported License](#).





Skeptical Science explains the science of global warming and examines climate misinformation through the lens of peer-reviewed research. The website won the Australian Museum 2011 Eureka Prize for the Advancement of Climate Change Knowledge. Members of the Skeptical Science team have authored peer-reviewed papers, a [college textbook on climate change](#) and the book [Climate Change Denial: Heads in the Sand](#). Skeptical Science content has been used in university courses, textbooks, government reports on climate change, television documentaries and numerous books.



The [Skeptical Science](#) website by Skeptical Science is licensed under a Creative Commons [Attribution 3.0 Unported License](#).