



This is the print version of the [Skeptical Science](http://sks.to/greenhouse) article '[Increasing CO2 has little to no effect](http://sks.to/greenhouse)', which can be found at <http://sks.to/greenhouse>.

How do we know more CO2 is causing warming?

What The Science Says:

The amount of warming caused by the anthropogenic increase in atmospheric CO2 may be one of the most misunderstood subjects in climate science. Many people think the anthropogenic warming can't be quantified, many others think it must be an insignificant amount. However, climate scientists have indeed quantified the anthropogenic contribution to global warming using empirical observations and fundamental physical equations.

Climate Myth: Increasing CO2 has little to no effect

"While major green house gas H2O substantially warms the Earth, minor green house gases such as CO2 have little effect.... The 6-fold increase in hydrocarbon use since 1940 has had no noticeable effect on atmospheric temperature ... " ([Environmental Effects of Increased Atmospheric Carbon Dioxide](#))

[Humans have increased the amount of carbon dioxide \(CO2\) in the atmosphere by about 40% over the past 150 years.](#)

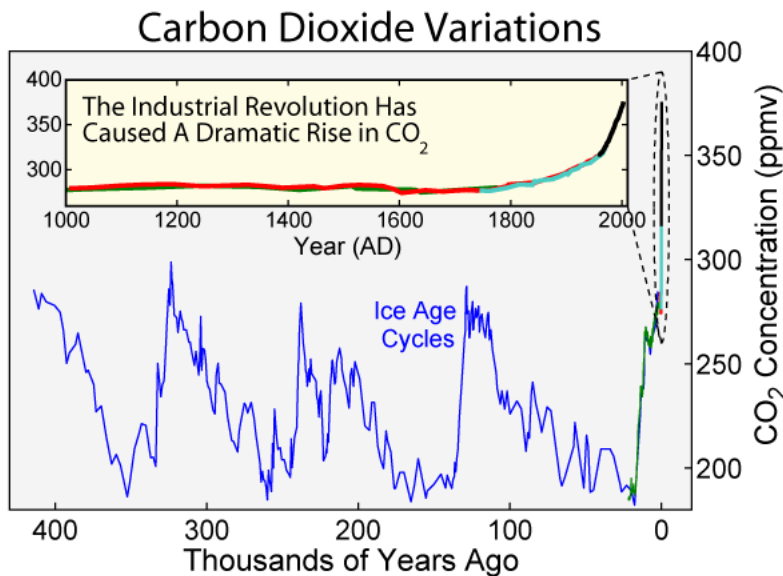


Figure 1: Carbon dioxide concentrations in the atmosphere over both the last 1000 years and the preceding 400,000 years as measured in ice cores

As a greenhouse gas, this increase in atmospheric CO2 increases the amount of downward longwave radiation from the atmosphere, including towards the Earth's surface.

Surface measurements of downward longwave radiation

The increase in atmospheric CO2 and other greenhouse gases has increased the amount of infrared radiation absorbed and re-emitted by these molecules in the atmosphere. The Earth receives energy from the Sun in the form of visible light and ultraviolet radiation, which is then re-radiated away from the surface as thermal radiation in infrared wavelengths. Some of this thermal radiation is then absorbed by greenhouse gases in the atmosphere and re-emitted in all directions, some back downwards, increasing the amount of energy bombarding the Earth's surface. This increase in downward infrared radiation has been observed

through spectroscopy, which measures changes in the electromagnetic spectrum.

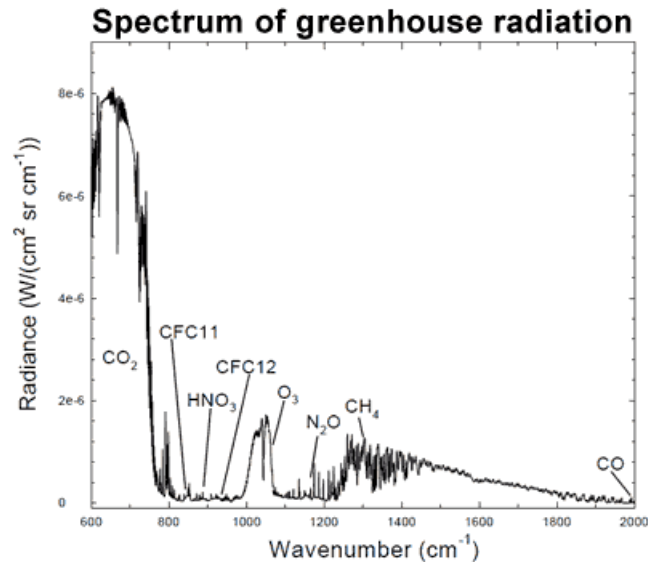


Figure 2: Spectrum of the greenhouse radiation measured at the surface. Greenhouse effect from water vapor is filtered out, showing the contributions of other greenhouse gases (Evans 2006).

Satellite measurements of outgoing longwave radiation

The increased greenhouse effect is also confirmed by NASA's IRIS satellite and the Japanese Space Agency's IMG satellite observing less longwave leaving the Earth's atmosphere.

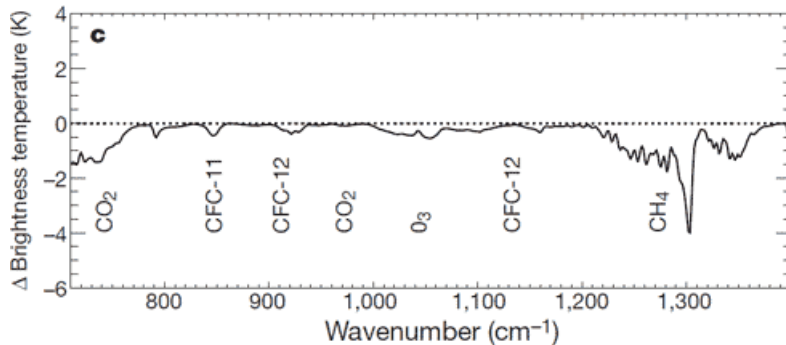


Figure 3: Change in spectrum from 1970 to 1996 due to trace gases. 'Brightness temperature' indicates equivalent blackbody temperature (Harries et al. 2001).

The increased energy reaching the Earth's surface from the increased greenhouse effect causes it to warm. So how do we quantify the amount of warming that it causes?

Radiative Transfer Models

Radiative transfer models use fundamental physical equations and observations to translate this increased downward radiation into a radiative forcing, which effectively tells us how much increased energy is reaching the Earth's surface. Studies have shown that these radiative transfer models match up with the observed increase in energy reaching the Earth's surface with very good accuracy (Puckrin et al 2004). Scientists can then derive a formula for calculating the radiative forcing based on the change in the amount of each greenhouse gas in the atmosphere (Myhre et al. 1998). Each greenhouse gas has a different radiative forcing formula, but the most important is that of CO₂:

$$dF = 5.35 \ln(C/C_0)$$

Where 'dF' is the radiative forcing in Watts per square meter, 'C' is the concentration of atmospheric CO₂ and 'C₀' is the reference CO₂ concentration. Normally the value of C₀ is chosen at the pre-industrial concentration of 280 ppmv.

Now that we know how to calculate the radiative forcing associated with an increase in CO₂, how do we determine the associated temperature change?

Climate sensitivity

As the name suggests, [climate sensitivity](#) is an estimate of how sensitive the climate is to an increase in a radiative forcing. The climate sensitivity value tells us how much the planet will warm or cool in response to a given radiative forcing. As you might guess, the temperature change is proportional to the change in the amount of energy reaching the Earth's surface (the radiative forcing), and the climate sensitivity is the coefficient of proportionality:

$$dT = \lambda * dF$$

Where 'dT' is the change in the Earth's average surface temperature, 'λ' is the climate sensitivity, usually with units in Kelvin or degrees Celsius per Watts per square meter (°C/[W/m²]), and 'dF' is the radiative forcing.

So now to calculate the change in temperature, we just need to know the climate sensitivity. Studies have given a possible range of values of 2-4.5°C warming for a doubling of CO₂ ([IPCC 2007](#)). Using these values it's a simple task to put the climate sensitivity into the units we need, using the formulas above:

$$\lambda = dT/dF = dT/(5.35 * \ln[2]) = [2 \text{ to } 4.5^\circ\text{C}]/3.7 = 0.54 \text{ to } 1.2^\circ\text{C}/(\text{W}/\text{m}^2)$$

Using this range of possible climate sensitivity values, we can plug λ into the formulas above and calculate the expected temperature change. The atmospheric CO₂ concentration as of 2010 is about [390 ppmv](#). This gives us the value for 'C', and for 'C₀' we'll use the pre-industrial value of 280 ppmv.

$$dT = \lambda * dF = \lambda * 5.35 * \ln(390/280) = 1.8 * \lambda$$

Plugging in our possible climate sensitivity values, this gives us an expected surface temperature change of about 1–2.2°C of global warming, with a most likely value of 1.4°C. However, this tells us the equilibrium temperature. In reality it takes a long time to heat up the oceans due to their thermal inertia. For this reason there is currently a planetary energy imbalance, and the surface has only warmed about 0.8°C. In other words, even if we were to immediately stop adding CO₂ to the atmosphere, the planet would warm another ~0.6°C until it reached this new equilibrium state (confirmed by [Hansen et al. 2005](#)). This is referred to as the 'warming in the pipeline'.

Of course this is just the temperature change we expect to observe from the CO₂ radiative forcing. Humans cause numerous other radiative forcings, both positive (e.g. other greenhouse gases) and negative (e.g. sulfate aerosols which block sunlight). Fortunately, the negative and positive forcings are roughly equal and cancel each other out, and the natural forcings over the past half century have also been approximately zero ([Meehl et al. 2004](#)), so the radiative forcing from CO₂ alone gives us a good estimate as to how much we expect to see the Earth's surface temperature change.

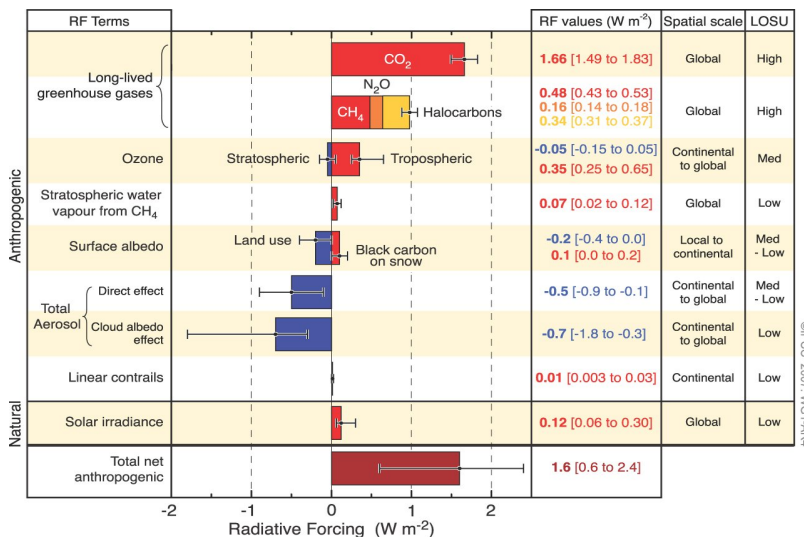


Figure 4: Global average radiative forcing in 2005 (best estimates and 5 to 95% uncertainty ranges) with respect to 1750 (IPCC AR4).

We can also calculate the most conservative possible temperature change in response to the CO₂ increase. Some climate scientists who are touted as 'skeptics' have suggested the actual climate sensitivity could be closer to 1°C for a doubling of CO₂, or 0.27°C/(W/m²). Although numerous studies have ruled out climate sensitivity values this low, it's worth calculating how much of a temperature change this unrealistically low value would generate. Using the same formulas as above,

$$dT = 1.8 * \lambda = 1.8 * 0.27 = 0.5^{\circ}\text{C}.$$

Therefore, even under this ultra-conservative unrealistic low climate sensitivity scenario, the increase in atmospheric CO₂ over the past 150 years would account for over half of the observed 0.8°C increase in surface temperature.

Conservation of Energy

Huber and Knutti (2011) published a paper in Nature Geoscience, *Anthropogenic and natural warming inferred from changes in Earth's energy balance*. They take an approach in this study which utilizes the principle of conservation of energy for the global energy budget using the measurements discussed above, and summarize their methodology:

"We use a massive ensemble of the Bern2.5D climate model of intermediate complexity, driven by bottom-up estimates of historic radiative forcing F , and constrained by a set of observations of the surface warming T since 1850 and heat uptake Q since the 1950s....Between 1850 and 2010, the climate system accumulated a total net forcing energy of 140×10^{22} J with a 5-95% uncertainty range of $95\text{-}197 \times 10^{22}$ J, corresponding to an average net radiative forcing of roughly 0.54 ($0.36\text{-}0.76$) Wm^{-2} ."

Essentially, Huber and Knutti take the estimated global heat content increase since 1850, calculate how much of the increase is due to various estimated radiative forcings, and partition the increase between increasing ocean heat content and outgoing longwave radiation. The authors note that more than 85% of the global heat uptake (Q) has gone into the oceans, including increasing the heat content of the deeper oceans, although their model only accounts for the upper 700 meters.

Figure 3 is a similar graphic to that presented in Meehl et al. (2004), comparing the average global surface warming simulated by the model using natural forcings only (blue), anthropogenic forcings only (red), and the combination of the two (gray).

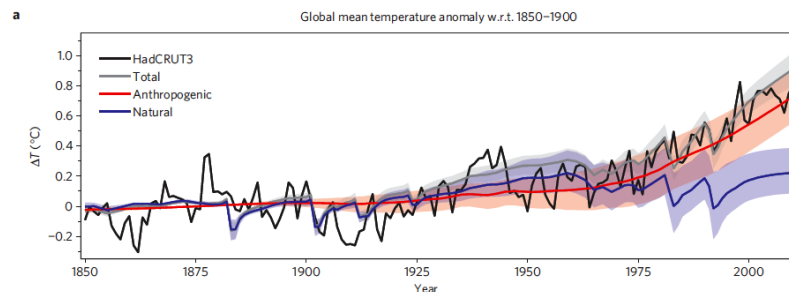


Figure 3: Time series of anthropogenic and natural forcings contributions to total simulated and observed global temperature change. The coloured shadings denote the 5-95% uncertainty range.

In Figure 4, Huber and Knutti break down the anthropogenic and natural forcings into their individual components to quantify the amount of warming caused by each since the 1850s (Figure 4b), 1950s (4c), and projected from 2000 to 2050 using the IPCC SRES A2 emissions scenario as business-as-usual (4d).

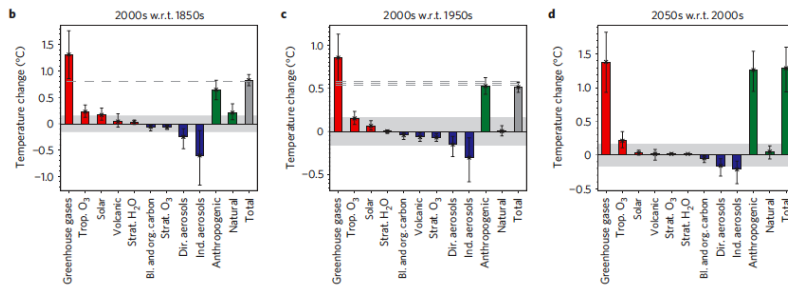


Figure 4: Contributions of individual forcing agents to the total decadal temperature change for three time periods. Error bars denote the 5–95% uncertainty range. The grey shading shows the estimated 5–95% range for internal variability based on the CMIP3 climate models. Observations are shown as dashed lines.

As expected, Huber and Knutti find that greenhouse gases contributed to substantial warming since 1850, and aerosols had a significant cooling effect:

"Greenhouse gases contributed 1.31°C (0.85-1.76°C) to the increase, that is 159% (106-212%) of the total warming. The cooling effect of the direct and indirect aerosol forcing is about -0.85°C (-1.48 to -0.30°C). The warming induced by tropospheric ozone and solar variability are of similar size (roughly 0.2°C). The contributions of stratospheric water vapour and ozone, volcanic eruptions, and organic and black carbon are small."

Since 1950, the authors find that greenhouse gases contributed 166% (120-215%) of the observed surface warming (0.85°C of 0.51°C estimated surface warming). The percentage is greater than 100% because aerosols offset approximately 44% (0.45°C) of that warming.

"It is thus extremely likely (>95% probability) that the greenhouse gas induced warming since the mid-twentieth century was larger than the observed rise in global average temperatures, and extremely likely that anthropogenic forcings were by far the dominant cause of warming. The natural forcing contribution since 1950 is near zero."

[A number of studies have used a variety of statistical and physical approaches](#) to determine the contribution of greenhouse gases and other effects to the observed global warming, like Huber and Knutti. And like Huber and Knutti, they find that greenhouse gases have caused more warming than has been observed, because other factors have had a net cooling effect over the past century (Figure 5).

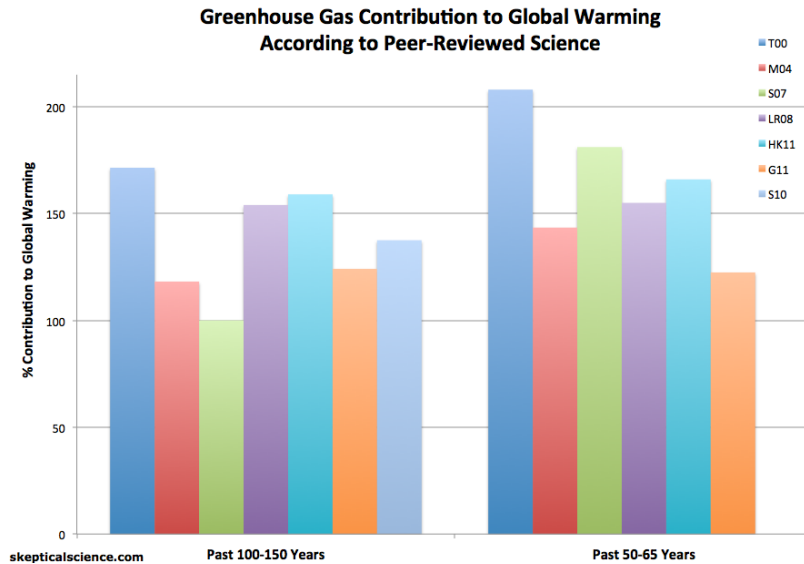


Figure 5: Greenhouse gas contribution to global warming according to various peer-reviewed attribution studies

Advanced rebuttal written by dana1981





Skeptical Science explains the science of global warming and examines climate misinformation through the lens of peer-reviewed research. The website won the Australian Museum 2011 Eureka Prize for the Advancement of Climate Change Knowledge. Members of the Skeptical Science team have authored peer-reviewed papers, a [college textbook on climate change](#) and the book [Climate Change Denial: Heads in the Sand](#). Skeptical Science content has been used in university courses, textbooks, government reports on climate change, television documentaries and numerous books.



The [Skeptical Science](#) website by Skeptical Science is licensed under a Creative Commons [Attribution 3.0 Unported License](#).